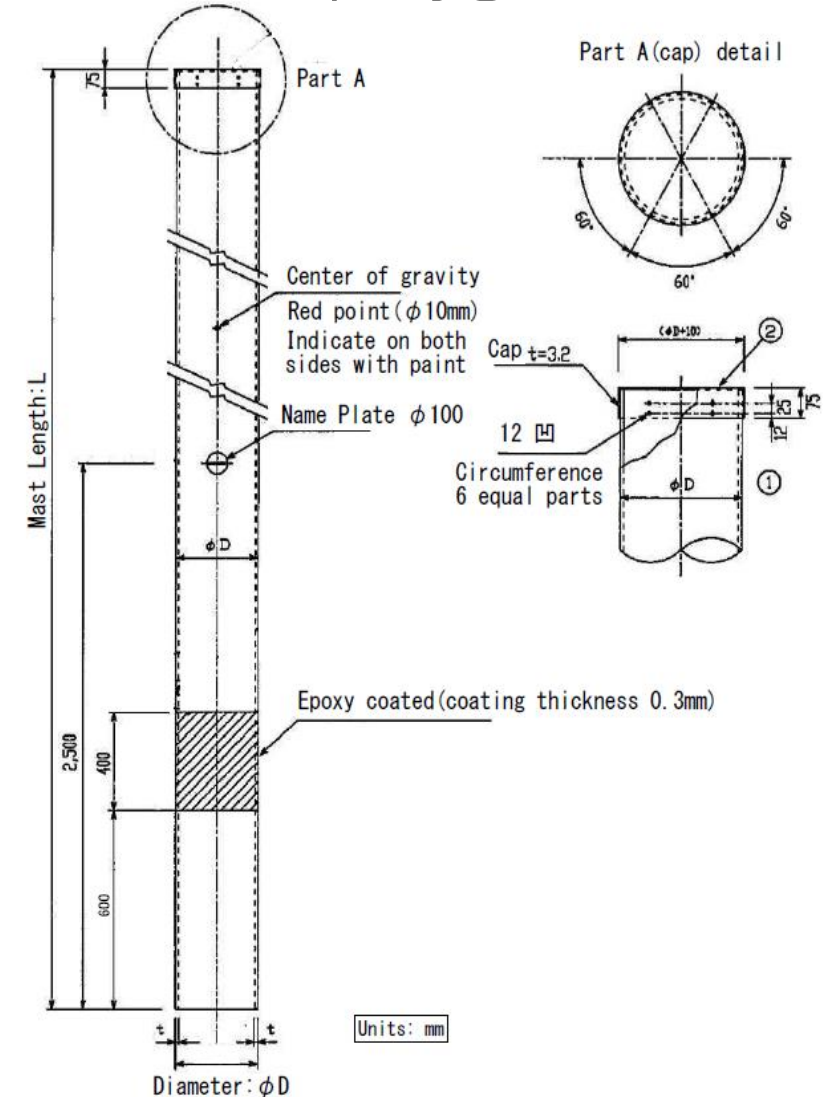
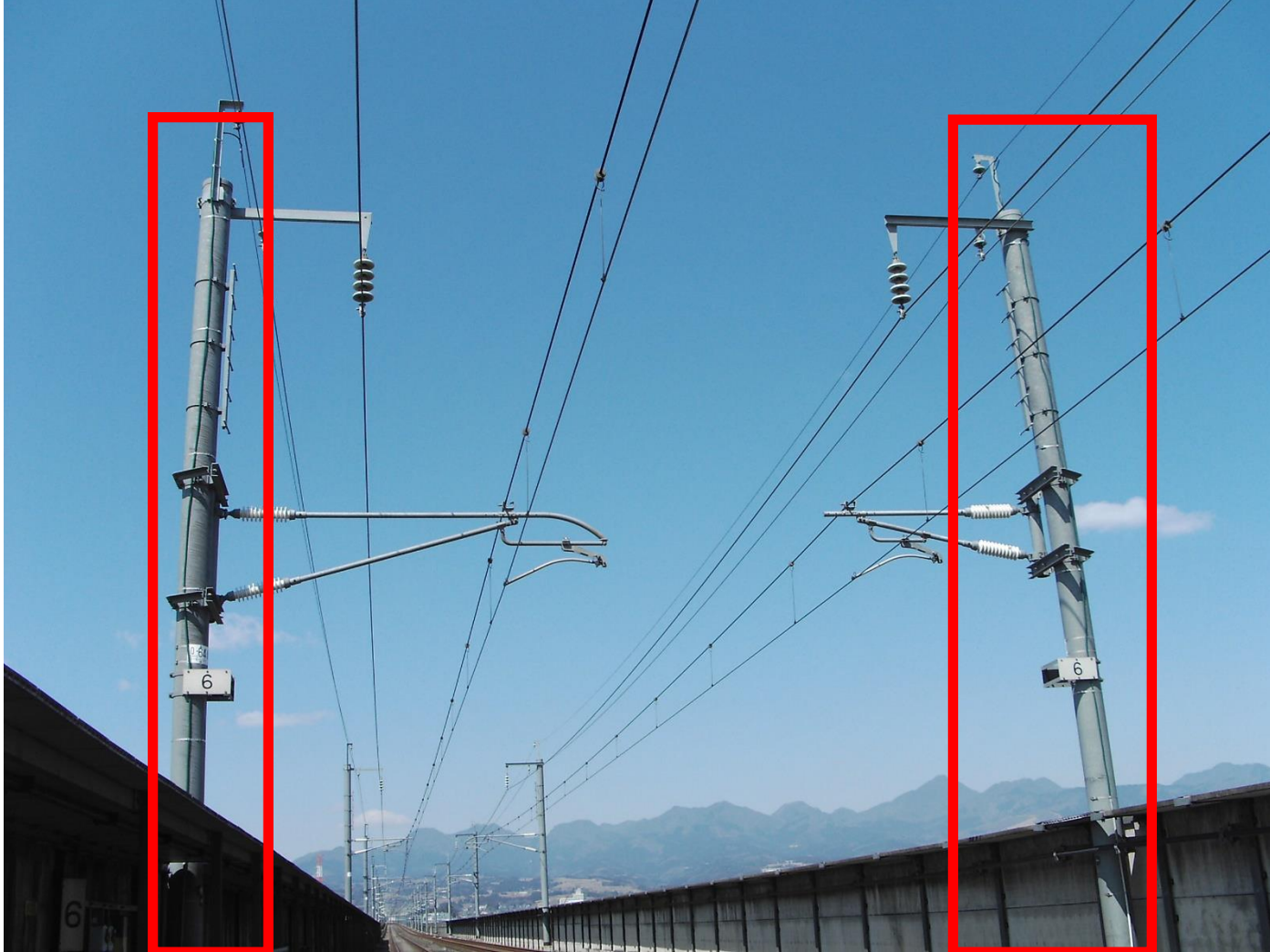


Rolled Steel Pipe Mast (1 of 2)

- The shape of cross section of the Rolled steel pipe mast for the overhead contact line of HSR should be circular(not polygonal).



Rolled Steel Pipe Mast (2 of 2)

Outer diameter “ ϕ ” (mm)	Thickness “t” (mm)	Type	Length of Mast	Tensile strength	Tentative quantity for MAHSR project
165.2	7.1	STK 400 STK 490 STK 500 STK 540 STKT 590	11.0m (:Standard) 14.5m (:Maximum)	At least 500 N / mm ²	Approx. 21,000 sets
216.3	6.0				
267.4	6.0				
355.6	6.4, 7.9, 9.5, 11.1, 12.7				
406.4	6.4, 7.9, 9.5, 12.7, 16.0				

etc.

The following standards need to be applied (Others applicable details of mentioned in MAHSR OHE Functional Specification) .

- JIS G 3106 Rolled steels for welded structure
- JIS G 3444 Carbon steel tubes for general structure
- JIS G 3474 High strength steel tubes for steel tower
- JIS H 0401 Test methods for hot dip galvanized coatings
- JIS H 8641 Hot dip galvanized coatings
- JIS Z 2241 Metallic materials-Tensile testing-Method of test at room temperature
- JIS Z 3841 Standard qualification procedure for semi-automatic welding technique

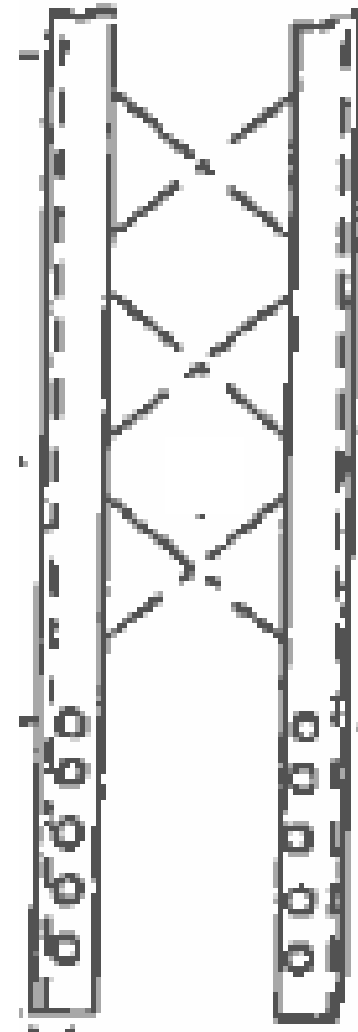
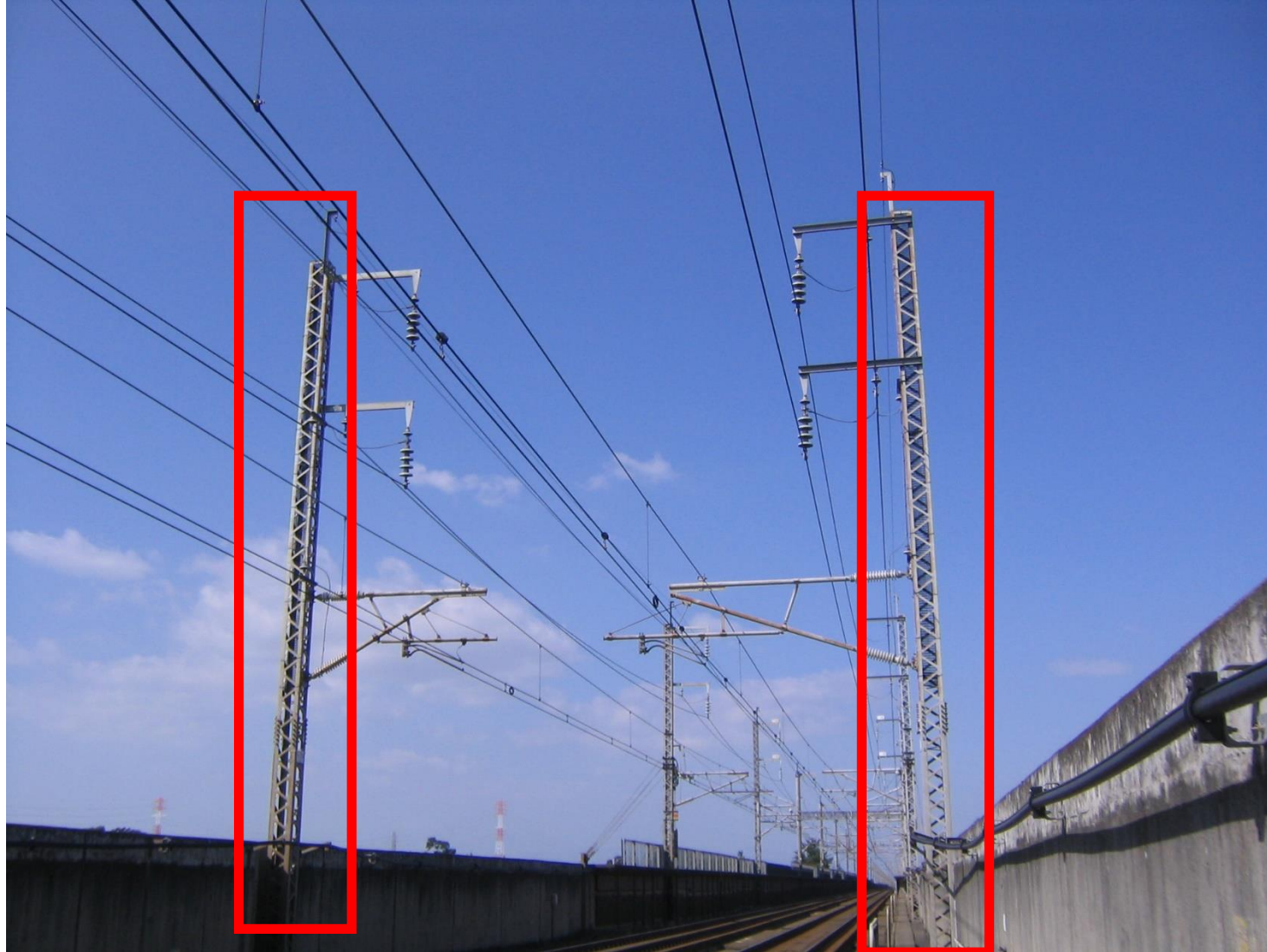
In addition to JIS, it should also refer to the following standards.

Japanese Architectural Standard Specification 6 Steel Work.

Appendix 6 Steel works accuracy inspection standard (Table 1 and 3)

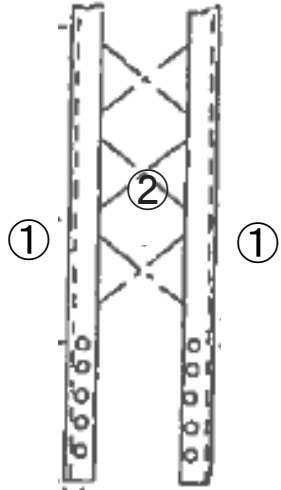
Fabricated Steel Mast(1 of 2)

- Fabricated steel mast for the overhead contact line of HSR.



Fabricated Steel Mast(2 of 2)

- Fabricated steel mast for the overhead contact line of HSR.



	Description	Sizes of components	Material Specification	Length of Mast	Tensile strength	Tentative quantity for MAHSR project
1	Main material	L 65 x 65 x 8 L 75 x 75 x 9 L 90 x 90 x10 L 90 x 90 x13	SS400 SS490 SM490A	11.0m (:Standard) 14.5m (:Maximum)	490N/mm ² to 610N/mm ²	Approx. 80 sets
2	Diagonal material	FS 50 x 6 FS 50 x 9				

etc.

The following standards need to be applied (Others applicable details of mentioned in MAHSR OHE Functional Specification) .

JIS B 1180	Hexagon head bolts and hexagon head screws
JIS B 1181	Hexagon nuts and hexagon thin nuts
JIS B 1186	Sets of high strength hexagon bolt, hexagon nut and plan washers for friction grip joints
JIS G 3101	Rolled steels for general structure
JIS G 3106	Rolled steels for welded structure
JIS G 3444	Carbon steel tubes for general structure
JIS H 0401	Test methods for hot dip galvanized coatings
JIS H 2107	Zinc ingots
JIS H 8641	Hot dip galvanizing
JIS Z 2241	Metallic materials --Tensile testing-- Method of test at room temperature
JIS Z 3211	Covered electrodes for mild steel, high tensile strength steel and low temperature service steel
JIS Z 3801	Standard qualification procedure for manual welding technique
JIS Z 3841	Standard qualification procedure for semi-automatic welding technique

In addition to JIS, please also refer to the following standards.

Japanese Architectural Standard Specification 6 Steel Work.

Appendix 6 Steel works accuracy inspection standard (Table 1 and 3)